

ozone

STRIKE BATTLE

MECHANICAL COMPACT GAMING KEYBOARD



USER MANUAL

ozone

IT'S ALL ABOUT
EVOLUTION

STRIKE BATTLE, SOLID AND PORTABLE.

Strike Battle offers the best selection of cherry mx keyswitches, a short-body and an ergonomic design to ensure a comfortable use. Its high quality aluminum layout gives you the best materials and performance to improve your gaming skills. It also features a minimalist design and a compact style that makes it perfect for competitive use, travelling gamers or anyone who needs more work space on their desk.

Take it to the battlefield.



STRIKE **BATTLE** KEY FUNCTIONS

- Fully MX Cherry switched Gaming Keyboard with back-lighting effects
- Adjust **Keys effective time response** in 7 speed transmissions:
1ms - 2ms - 4ms - 8ms - 12ms - 14ms - 16ms



+

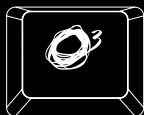


Reduces Speed



Increases Speed

- Adjust **Polling Rate**:
125 Hz - 250 Hz - 500 Hz - 1000 Hz



+



Reduces Polling Rate



Increases Polling Rate

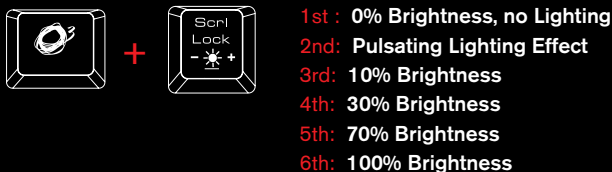
- Multimedia shortcut keys on keyboard from F5 - F12

Press  key for media playback functions



- Press  + **Scroll Lock** on keyboard to adjust back lighting effects

Default Mode: Pulsating Lighting Effects



- Gaming Mode: Press  + **Pnrt Scrn** on keyboard to enter gaming mode.

In gaming mode, Strike Pro will work under following conditions:

Left **Window Key** Disabled

M1 - M6 Macro keys Enabled



AVAILABLE **MX CHERRY** COLORS

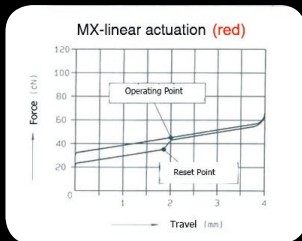
CHERRY RED KEY TYPE

no tactile bump



SWITCH TYPE.....CHERRY MX RED
TYPE.....LINEAR SWITCH
TACTILE.....NO

CLICKY.....NO
ACTUATION FORCE.....45G
KEY TRAVEL.....2MM TO ACTUATION, 4MM TO BOTTOM

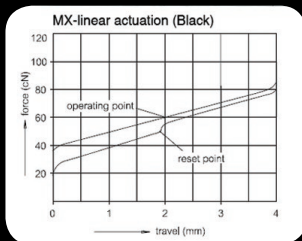


CHERRY BLACK KEY TYPE



SWITCH TYPE.....CHERRY MX BLACK
TYPE.....LINEAR SWITCH
TACTILE.....NO

CLICKY.....NO
ACTUATION FORCE.....60G (40g - 80g overall)
KEY TRAVEL.....2MM TO ACTUATION, 4MM TO BOTTOM



STRIKE BATTLE offers you the choice to pick the key switches that suit YOU from the four most popular MX CHERRY switch colors – black, red, blue and brown.

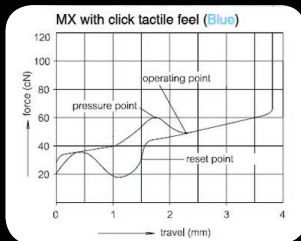
CHERRY BLUE KEY TYPE

tactile bump



SWITCH TYPE.....CHERRY MX BLUE
TACTILE.....YES, PRECISE

CLICKY.....YES
ACTUATION FORCE.....50G (60g Peak Force)(Force Diagram)
KEY TRAVEL.....2MM TO ACTUATION, 4MM TO BOTTOM

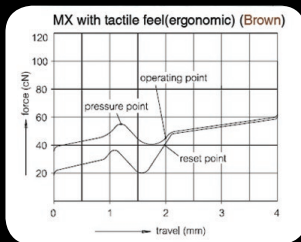


CHERRY BROWN KEY TYPE



SWITCH TYPE.....CHERRY MX BROWN
LINK.....DATASHEET
TACTILE.....YES

CLICKY.....NO
ACTUATION FORCE.....45G (55g Peak Force)(Force Diagram)
KEY TRAVEL.....2MM TO ACTUATION, 4MM TO BOTTOM



SYSTEM REQUIREMENTS

1. Operation System: Windows XP / Windows Vista / Windows 7 / Windows 8.
2. Free USB 2.0 port.
3. 50 MB free hard disk space.

INSTALLATION INSTRUCTIONS

OS: Windows XP / Vista / 7 / 8.

1. Plug USB connector of STRIKE BATTLE to a USB port of your PC.
2. Connect to the internet and enter www.ozonegaming.com
3. At the bottom of the page in the footer menu under "SUPPORT", click on "**DOWNLOADS**".
4. Here you will see a list of products, look for **STRIKE BATTLE** and download the **Driver** and the **Manual**.

STRIKE BATTLE DRIVER

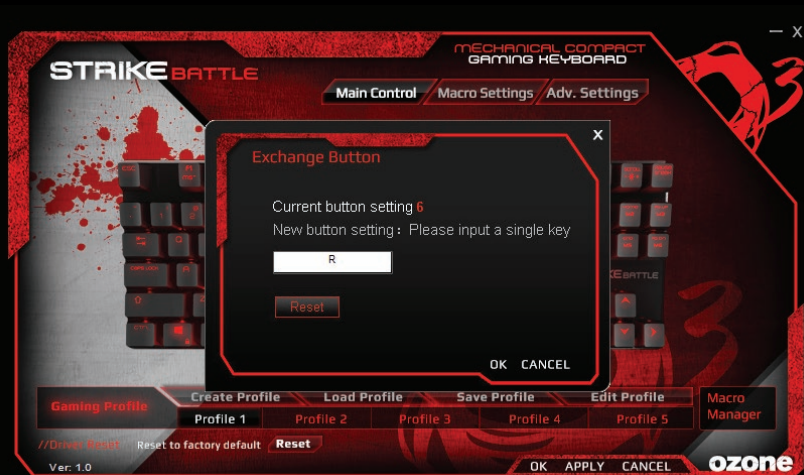


KEYBOARD CONFIGURATION

1. MAIN CONTROL

Exchange Key

- 1) In the “Main Control” section, click the key that you want to change (except special keys that are not configurable).
- 2) In the pop-up window, enter the desired new keys and click “OK”.



3) Then click “APPLY” to complete the change. Ex. Key “J” is now marked in RED and will execute “K”.



2. MACRO SETTINGS

Macro is a series of keystrokes which can be assigned to a single key on the keyboard once its recorded. In the other words, it is a series of keystrokes, in which every key press, release, and delay is being recorded. The delay is the duration between the “press and release” of keys or “release and press” of keys, which all can be automatically recorded and outputted once the macro is set.

Create and assign a Macro

Programmable Macro Keys: M1, M2, M3, M4, M5, M6.

- 1) Select a macro key and click “Macro Manager” from the menu.

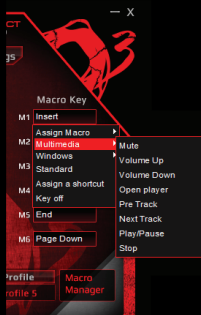


- 2) In the pop-up window, click “NEW” and give a personalized name to the macro, then start to create your macro.
- 3) Select the options of “Record Delays” and set the “Loop Times” from the right column if needed.
- 4) Click “Start Record” type a series of keys desired and click “Stop Record” when finished. Click “OK” to continue.
- 5) Assign one of the “Macros” created to a “Macro Key” and click “APPLY” to complete the setting.



MULTIMEDIA HOTKEY

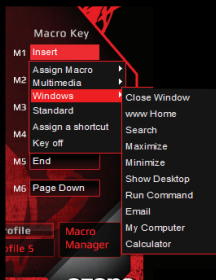
1) Select a macro key and click "Multimedia" from the menu.



2) Select the desired function in the sub-menu and click "APPLY" to confirm the setting.

WINDOWS MANAGEMENT

1) Select a macro key and click "Windows" from the menu.

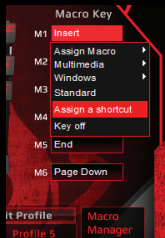


2) Select the desired function in the sub-menu and click "APPLY" to confirm the setting.

ASSIGN A SHORTCUT

Single key punch to activate a combination of keys that are often used.

1) Select a macro key and click "Assign a Shortcut" from the menu.

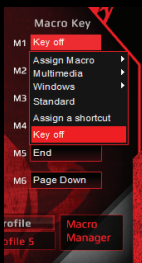


2) Select and enter the desired combination of keys from the pop-up window and click "OK" to continue.

3) Click "APPLY" to complete the setting. Ex. now the "Ctrl" + "C" will be executed.

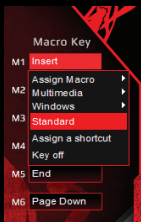
KEY OFF: DISABLE THE KEY FUNCTION

1) Select a macro key and click "Key Off" from the menu, then click "APPLY" to confirm the setting.

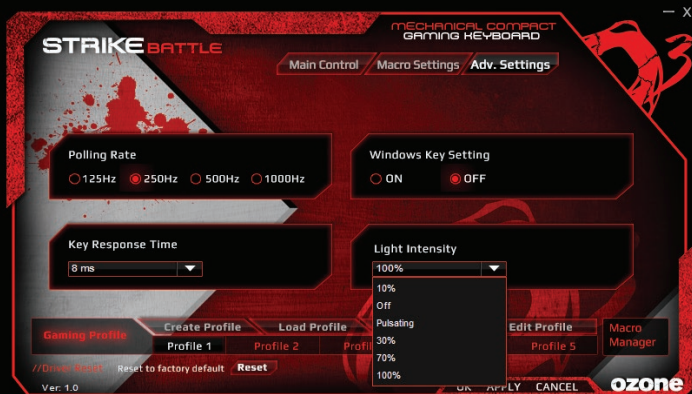


STANDARD: RESET TO DEFAULT KEY FUNCTION

1) Select a macro key and click "Standard" from the menu, then click "APPLY" to confirm the setting.



3. ADVANCED SETTINGS

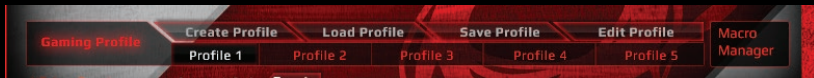


In "Advanced Settings", you can set the "Polling Rate", disable "Windows Key", adjust "Key Response Time", and change LED "Back-light Intensity".

4. GAMING PROFILE SETTINGS

Each configuration profile corresponds to a personalized keyboard setting. Therefore, you can create and save specific configuration profiles for certain games. The driver comes with 5 profiles: Profile#1 ~ Profile#5.

The default path of the saved configurations is in the “Config” folder under the “Driver Installation Directory”, in which you can find 5 corresponding files for the 5 profiles on the main skin.

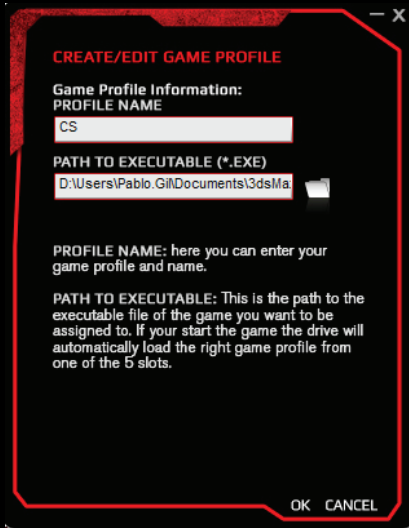


Under “Gaming Profile” setting, there are options to “Create Profile”, “Load Profile”, “Save Profile”, and “Edit Profile” for you to set your personalized configuration. You can create a variety of configurations and save them for future use. This will avoid duplication of settings.

If you switch to a different computer, you can simply import your saved configurations and you will not have to set your personalized settings again.

A. CREATE PROFILE

1) Click "Create Profile" to create your personalized PROFILE NAME and PATH to the GAME EXECUTABLE FILE (If you start the game the drive will automatically load the right game profile from one of the 5 slots.)



CREATE/EDIT GAME PROFILE

Game Profile Information:
PROFILE NAME
CS

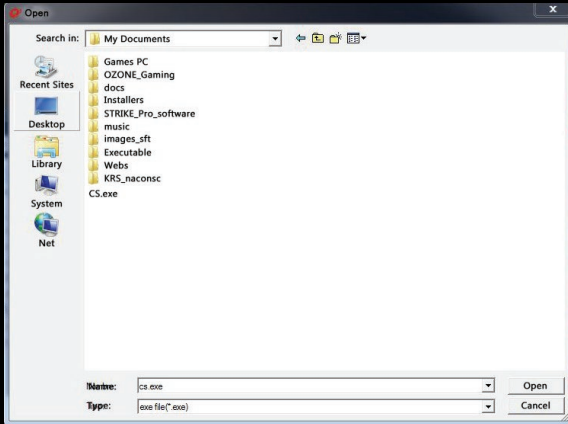
PATH TO EXECUTABLE (*.EXE)
D:\Users\Pablo.Gil\Documents\3dsMa

PROFILE NAME: here you can enter your game profile and name.

PATH TO EXECUTABLE: This is the path to the executable file of the game you want to be assigned to. If you start the game the drive will automatically load the right game profile from one of the 5 slots.

OK CANCEL

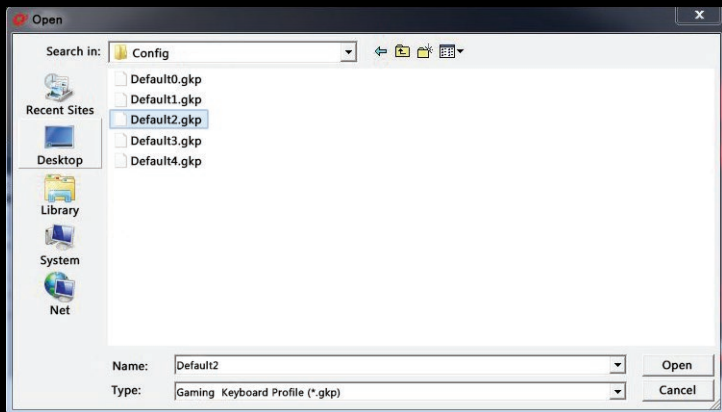
- 1.1) Create your profile name in the column "PROFILE NAME".
- 1.2) Click the folder symbol and select your path to the game executable file from the pop-up window.



- 2) Click "OK" to confirm the change.
- 3) Click "APPLY" to apply the change.

B. LOAD PROFILE

1) Click “Load Profile” to load previous settings of certain profiles.

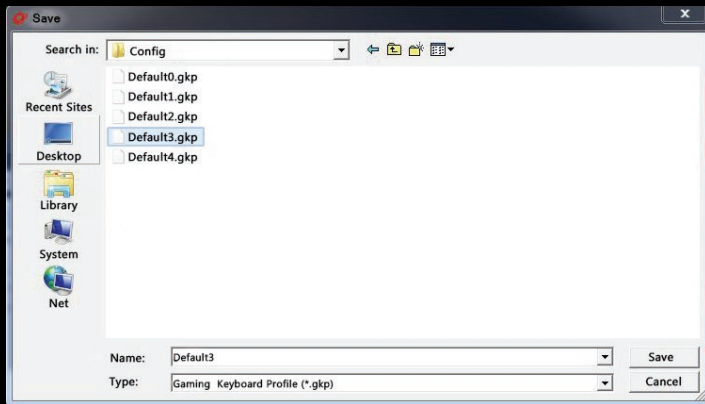


2) Select the profile to be imported and click “OPEN” in the pop-up window.

3) Click “APPLY” to apply the changes.

C. SAVE PROFILE

1) Click “Save Profile” to save the settings to an assigned file.



2) Select the assigned route/file and click “SAVE” in the pop-up window.

3) Click “APPLY” to apply the changes.

D. EDIT GAME PROFILE

1) Click “Edit Profile” to modify the personalized PROFILE NAME and PATH to the GAME EXECUTABLE FILE.



- 2) Click “OK” to confirm the changes.
- 3) Click “APPLY” to apply the changes.

5. RESET TO DEFAULT

1) Click "Reset" on the main skin.



2) Click "OK" on the pop-up window and reset to default.

FEATURES

- ▶ HIGH QUALITY ALUMINUM TOP CASE
- ▶ TENKEYLESS MECHANICAL KEYBOARD
- ▶ 30 MACROS IN 5 DEFAULT PROFILES
- ▶ FULL MECHANICAL CHERRY MX SWITCHES
- ▶ 50,000,000 KEYSTROKES
- ▶ ADJUSTABLE POLLING RATE
- ▶ 64KB ON BOARD MEMORY





TENKEYLESS : PERFECT FOR TRAVELLING AND
SAVING SPACE IN YOUR WORKSTATION.

WEEE NOTICE:

Symbol for Separate Collection in European Countries.
This symbol indicates that this product is to be collected separately.
The following apply only to users in European countries:



- This product is designated for separate collection at an appropriate collection point. Do not dispose of as household waste.
- For more information, contact the retailer or the local authorities in charge of waste management.

©2014 OZONE Gaming Gear. All rights reserved.



ozone

IT'S ALL ABOUT EVOLUTION

WWW.OZONEGAMING.COM